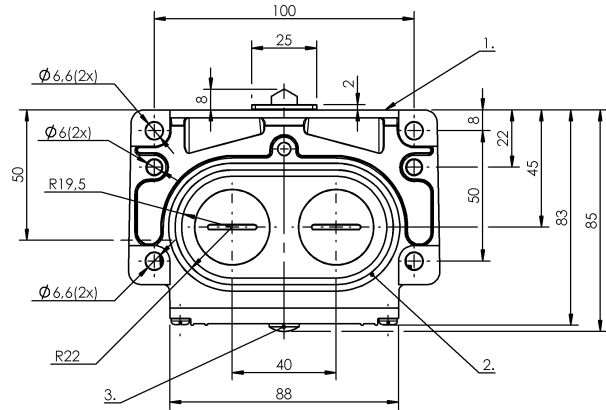
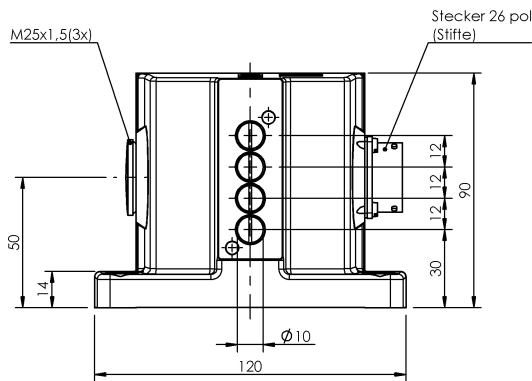


Mechanical Cam Switches
BNS 819-X536-D04-D12-100-10-FD
Order Code: BNS0323

BALLUFF



1) Reference edge, 2) Sealing ring, 3) Function indicator FD/FE/LL



Basic features

Additional features	Special switch Special wiring
Approval/Conformity	CE UKCA CCC WEEE
Basic standard	IEC 60947-5-1
DIN switch	DIN 43697
Operating principle	1-4. Switch position: Mechanical
Version	Snap contact

Display/Operation

Function indicator	1-4. Switch position: FD - 6...60 V
---------------------------	-------------------------------------

Electrical connection

Connection type	1-4. Switch position: Screw terminal
------------------------	--------------------------------------

Electrical data

Continuous current	1-4. Switch position: 6 A
Rated operating voltage Ue	1-4. Switch position: 6...60 V
Switching function mechanical	One NO and one NC galvanically isolated Double-interrupting Dual changeover
Switching rate	1-4. Switch position: 300/min

Environmental conditions

Ambient temperature	-5...85 °C
IP rating	IP67

Functional safety

B10d (EN ISO 13849-1)	BSE 30.0: 30 mil. switching cycles
------------------------------	------------------------------------

Material

Housing material	Aluminium, Anodized
Housing material, surface protection	Anodized
Material contacts	1-4. Switch position: Silver, gold plated
Plunger material	1-4. Switch position: 1.4034 stainless steel

Mechanical Cam Switches
BNS 819-X536-D04-D12-100-10-FD
Order Code: BNS0323



Mechanical data

Approach direction	longitudinal, parallel to attachment surface
Approach speed	1-4. Switch position: 40 m/min
Distance cam - reference edge	1-4. Switch position: 4.50...5.00 mm
Flange, feed-through	2 threaded exit M25
Installation	Vertical

Life expectancy mechanical	1-4. Switch position: 30 mil. switching operations
Number of switching positions	4x Chisel Mechanical
Plunger style	1-4th switch position: Chisel
Switch actuation force	1-4. Switch position: 20 N
Switching element	1-4. Switch position: BSE 30.0

Range/Distance

Reproducibility	1-4. Switch position: ±0.002 mm
------------------------	---------------------------------

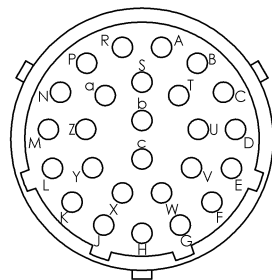
Remarks

Connection / pin assignments determined by customer. Does not correspond to a known technical standard.

Indication of the MTTF- / B10d value does not represent a binding composition and/or life expectancy assurance; these are simply experiential values with no warranty implications. These declared values do not extend the limitation period for claims arising from defects or influence them in any other way.

We call you attention to the fact that the product listed here alone are not considered safety components according to Machine Directive 2006/42/EC Article 2c. It is however possible to construct structures per EN 13849-1 having a high performance level using the products with two channels.

Connector Drawings



View of connector side

